



# CCF ANNUAL REVIEW 15/16



# CCF Annual Review 15/16

Aim is

Thank you for the role you have played in all that has been achieved, delivered, created in past 12 months

**AND**

To share with you plans for next 12 months ...so you can get more involved, help us make new connections...



# Our Year to 31 March 16

To cover

- Work with donors – both existing and new
- Support we offer donors
  - Grant making programmes
  - Events to raise awareness, meet other donors and grant recipients, have fun!
  - Reports to inform, report back
- New trustees/staff/volunteers



# Our donors

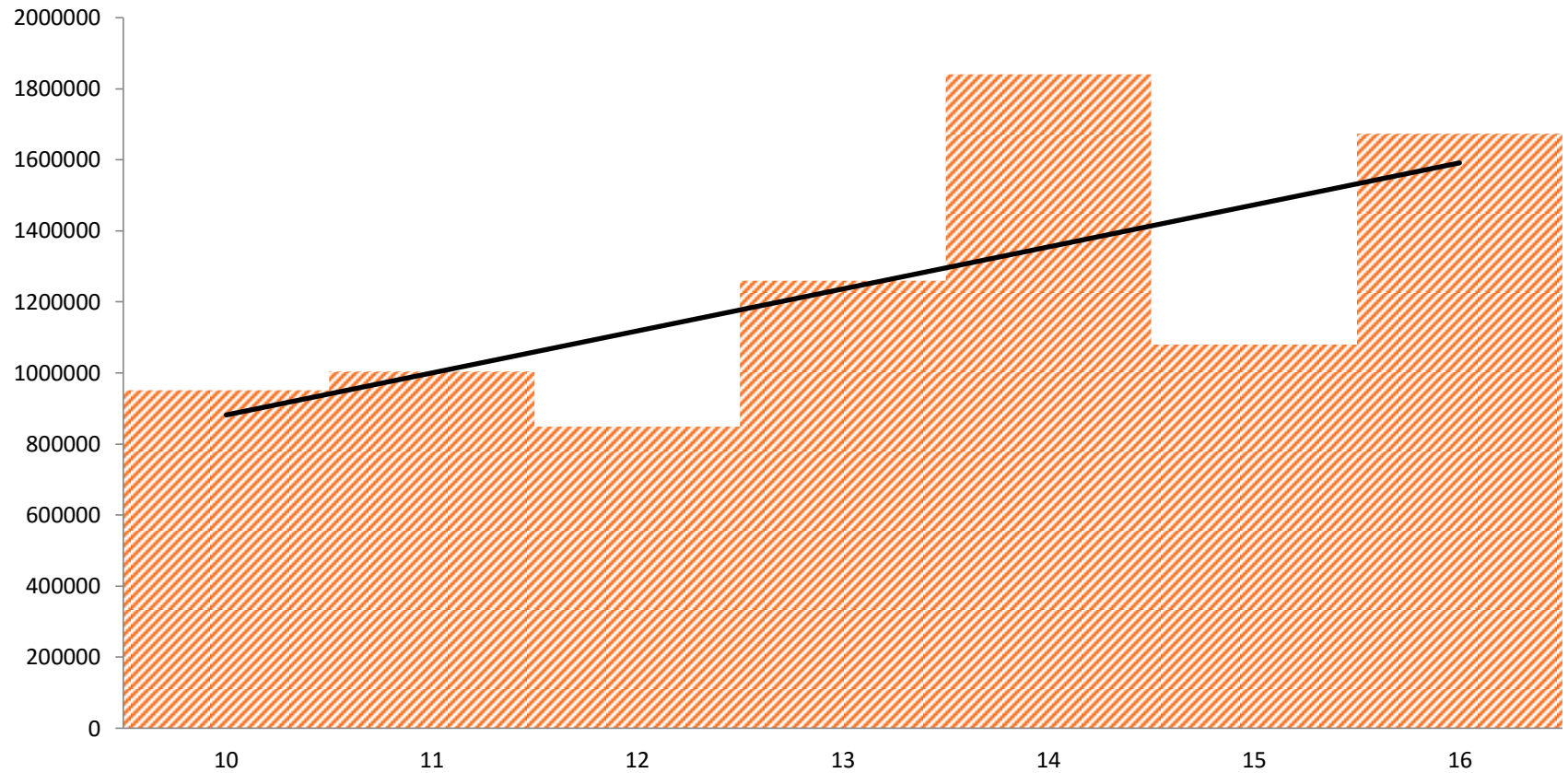
([Funds A-Z](#))

We have

- Enjoyed the loyal, ongoing support and interest from many donors
- Welcomed new relationships which have created, for example,
  - Local Youth Social Action Fund
  - Charity Lifeline Community Fund
  - LEP Prize Challenge (Round 2)
  - Wryde Croft Wind Farm Community Fund



## Grants Awarded to 31 March





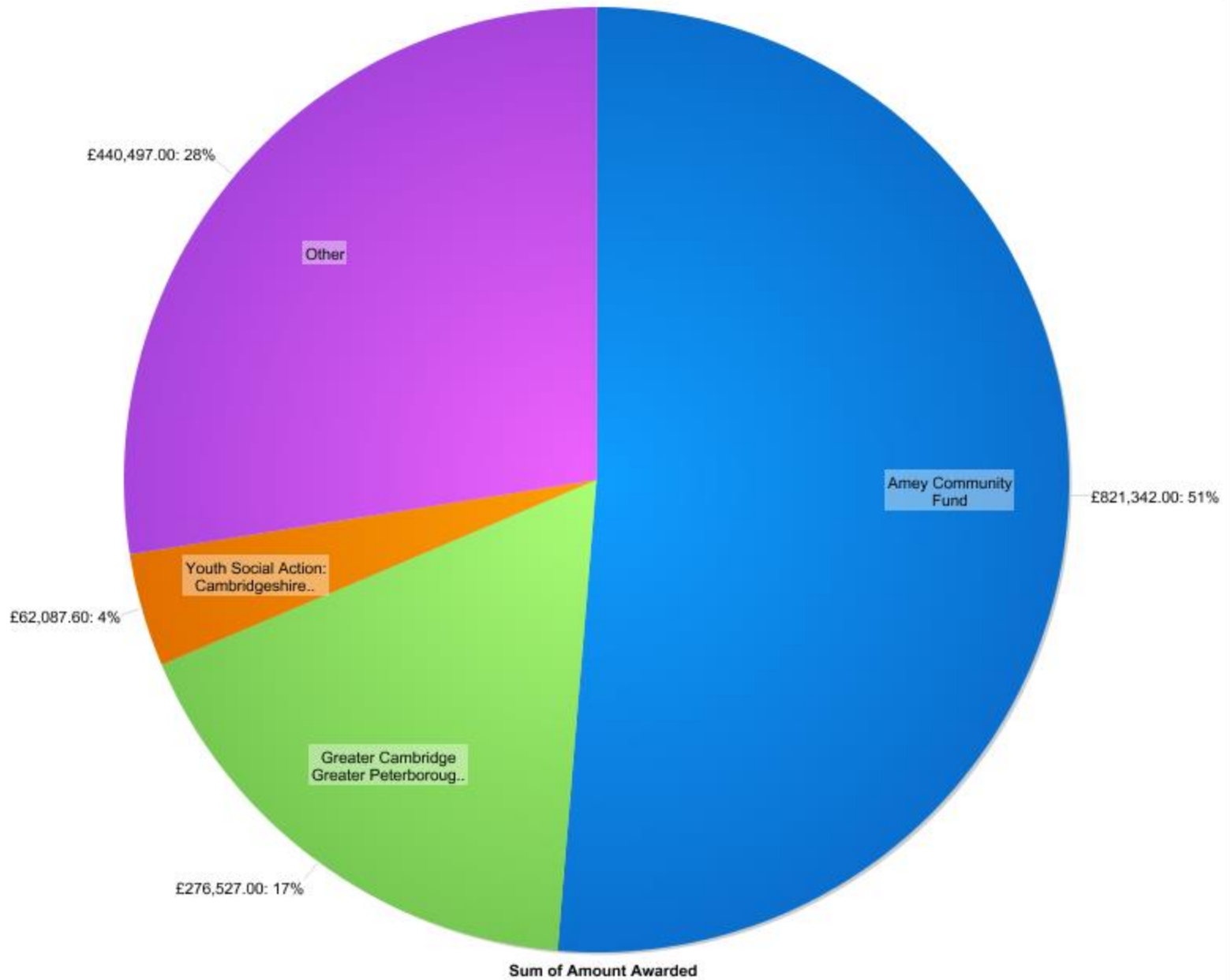
# £1.6m of grants

- Supporting 270 charitable projects (a 25% inc on in volume on py)

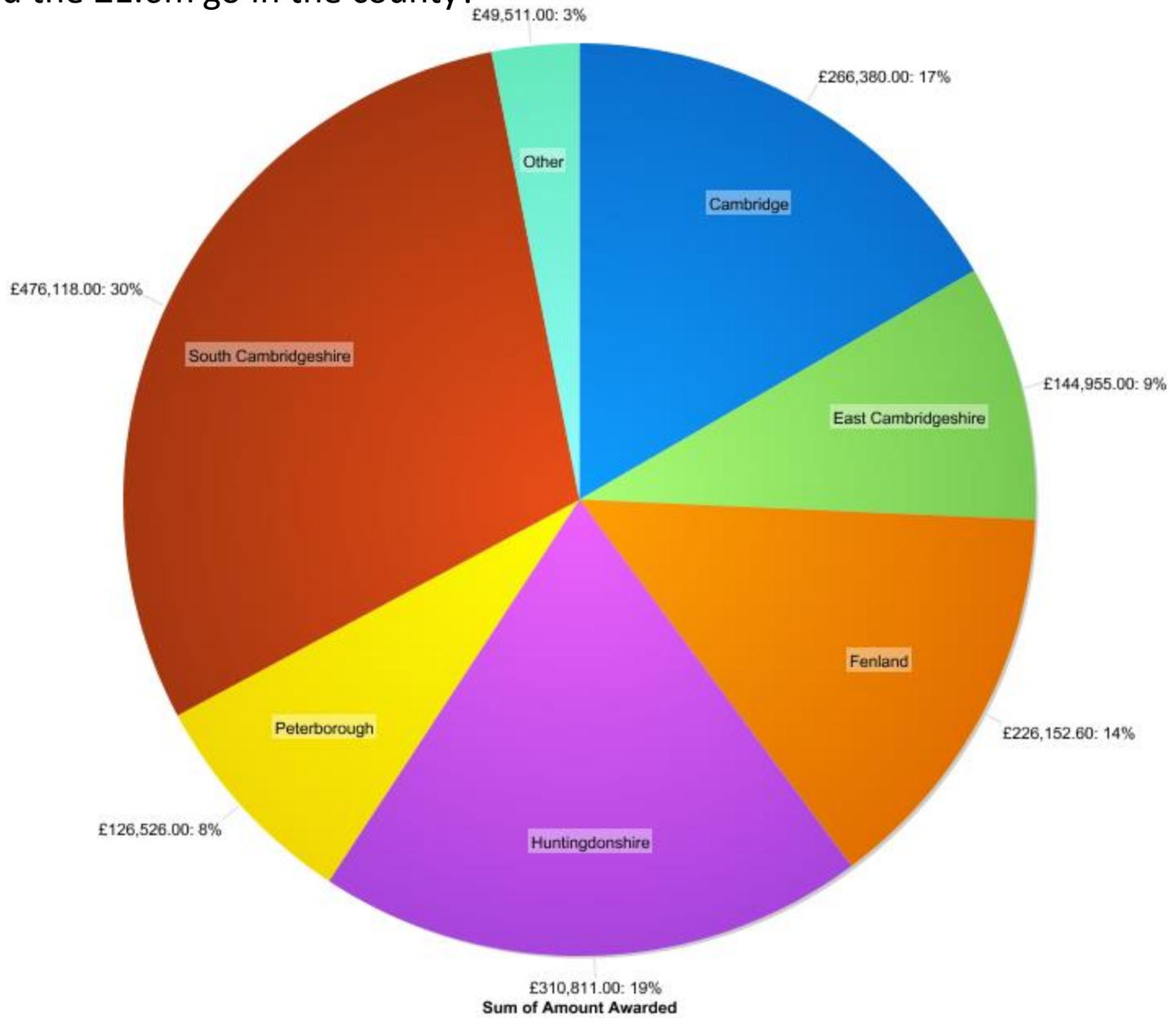
<https://www.google.com/maps/d/viewer?mid=zEjnzSnn1PLc.kzIRWRVnQ6wQ>

- The smallest grant £150 – part of our Warm Homes programme
- The largest grants (£40,000) from the
  - Amey Community Fund
  - Greater Cambridge Greater Peterborough LEP Prize Challenge

# Which funds offered the £1.6m?

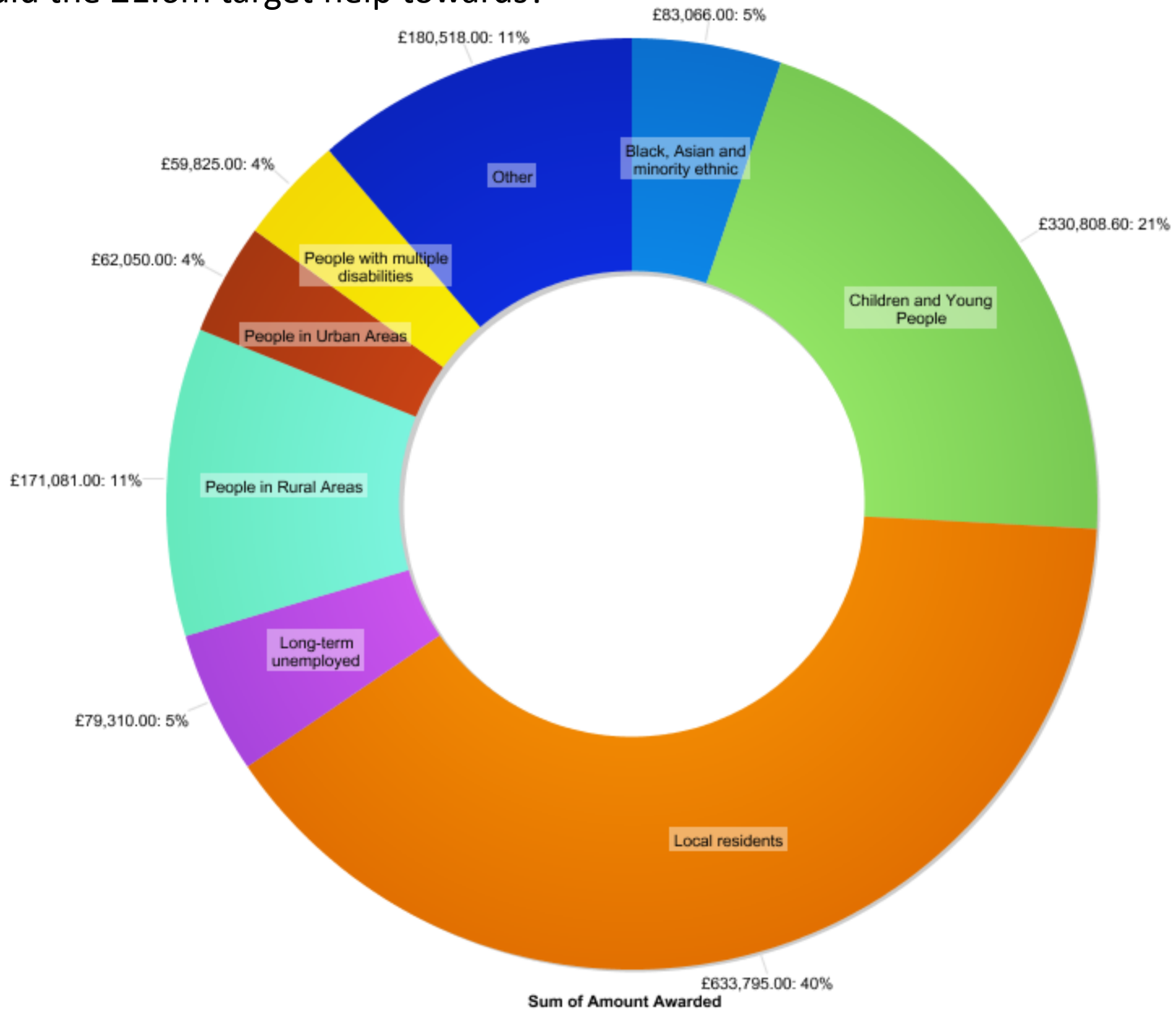


# Where did the £1.6m go in the county?

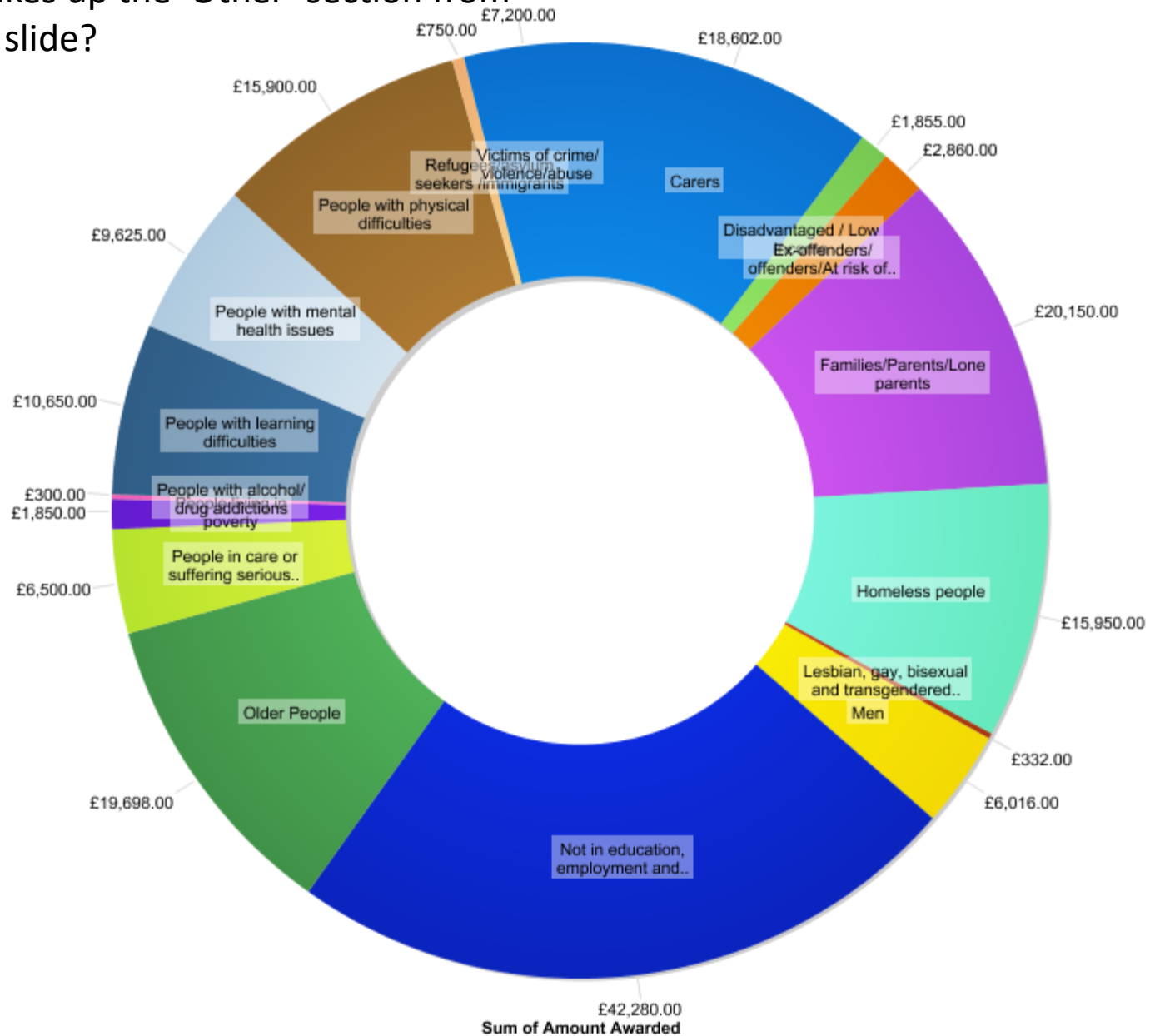




# Who did the £1.6m target help towards?

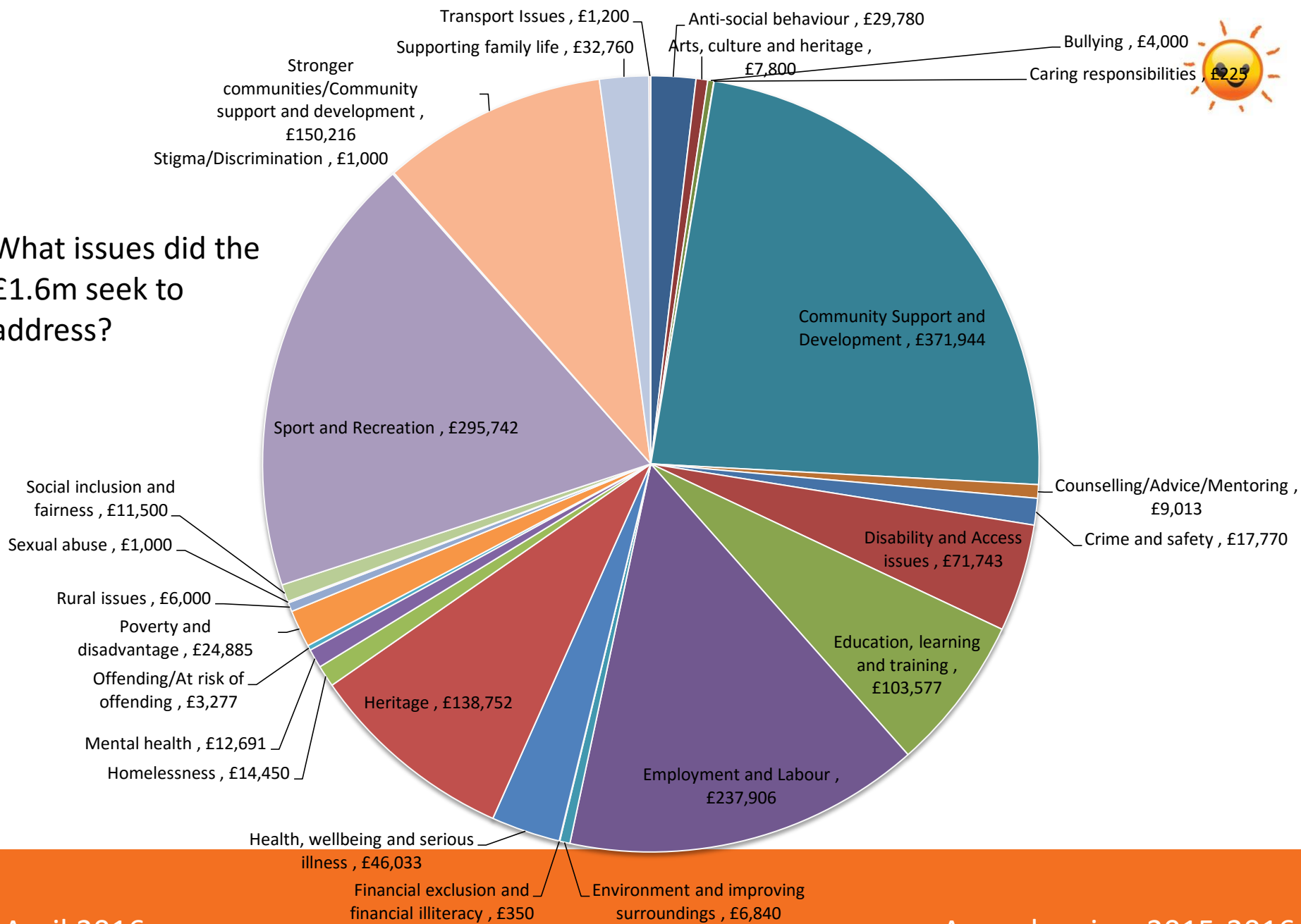


What makes up the 'Other' section from previous slide?





# What issues did the £1.6m seek to address?



## Some of tweets we sent out in the year



Thanks to counselling from Stars, Sian (14) regains confidence and positivity after the death of her Nana.

Papworth Team Ministry reunite old schoolmates Dawn and Sheila at woodwork class after 60 years apart!

When Julie and Geoff broke up their two daughters didn't see their mum for months. Now they see her every week.

Headway's film-making session leaves brain injury sufferer Dan with dreams of Hollywood.

Senior citizen Brenda from Coton secretly learns tech skills at Village Hall then leaves her grandson speechless on FaceTime!

Thanks to Fusion Youth Projects, Jack, 15, is now a master at first aid, football and making friends!

# Donor Support: CCF Events



Events to raise awareness, meet other donors and grant recipients, and have fun!

- Cambridge Bumps Jul 15
- Childerley Hall Sept 15
- High Sheriff Awards Mar 16
- Domestic Abuse Forum April 16




# Donor Support: Reports

Reports to inform, start conversations, report back



- Vital Signs
- Donor Newsletters
- Impact Reports



**newsletter** CambridgeSuff Community Foundation  Issue 12  
August 2015

**Ridgeons Community Fund**

**fund update:**

- Over **£44,000** to projects based within a 10 mile radius of Ridgeons' branches
- Projects supporting:
  - Improving Health
  - Children, young people and families

**Grants Awarded since May 2015:**

- **Suffolk Artlink** – received £300 towards one "Crown Round" at Colchester General Hospital.
- **Cambridgeshire Hard of Hearing Club** – were given £200 to fund the hire of a room at "The Meadows Community Centre" for monthly meetings.
- **DIAL Peterborough** – £520 was awarded to fund a football coach for a Mental Wellbeing football group for 6 months.
- **Involve Active** – in Waverley, Norfolk, received £225 to cover travel expenses for drop-in sessions for parents/carers of young people attending their services.
- **Jimmy's Night Shelter** – in the city of Cambridge, were awarded £500 to run school workshops as part of an art project on the subjects of Jimmy's, homelessness & identity and also contributing to Jimmy's 20th birthday celebrations within the community.
- **Uttlesford Buffy Bus Association** – covering an area around Saffron Walden in Essex, received £500 as a contribution towards the play/leader/driver's salary.
- **St. Luke's VA CofE Primary School** – in Arbury, Cambridge were given £623 to install some playground equipment that is low level and therefore accessible to children with special needs.

**RIDGEON** about the fund: supporting small, local voluntary & community groups, which undertake charitable work in Cambridgeshire, Bedfordshire, Norfolk, Hertfordshire and Suffolk.  
[www.cambscf.org.uk/ridgeons-community-fund.html](http://www.cambscf.org.uk/ridgeons-community-fund.html)

# Trustees/staff/volunteers & other help



Alison Griffiths

Harriet and William

John Dutton

Volunteers

- Visitors
- 3 Interns
- CCF Grant Panels
- Liz Damazer

# Our plans for year to 31 March 17

- Vital Signs - Oct 16
- New activities
  - New donor focused “magazine” Summer
  - CamCCWeek June 16
  - Volunteer days
- New donors/funds
  - Healthy Fenland Fund
  - Cambridge Technology Fund
  - Domestic Abuse Fund
- Events
  - Annual Review
  - Donor event Cheffins
- Invest more resource into Peterborough CF
- Accreditation – Sept 16
- [New website](#) – April 16
- Appoint new staff – April /May 16





# Twitter @cambscf

